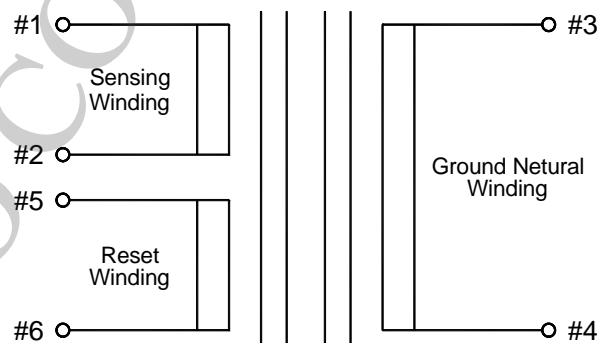
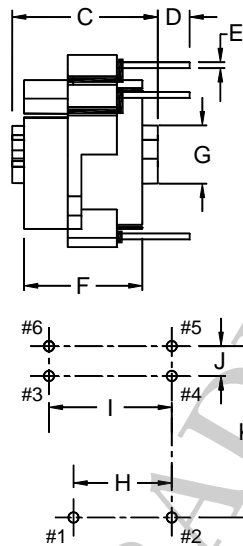
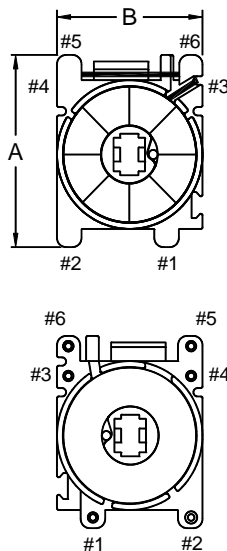


TL306 Series

- All materials are designated under Insulation Class B (130°C)
- Dielectric strength between windings: 2500V_{rms} min. 3sec.
- Max. operating temperature: +85°C
- Construction by two toroidal coils with shield washer, insulator and holder.
- All winding are AWG#40 2UEW 155°C
- Reset wire is AWG#30 Triple insulated wire.
- RoHS Compliant



SCHMATIC

	A	B	C	D	E	F	G	H	I	J	K	Weight (g)
Dimension (mm)	21.0	16.5	17.0	3.0	SQ 0.64	13.5	6.25	10.8	13.5	3.2	18.4	6.0
Tolerance (mm)	max.	max.	max.	±0.3	±0.3	max.	±0.3	±0.3	±0.3	±0.3	±0.5	approx.

Part Number	SENSING WINDING		GROUND NETURAL WINDING		RESET WINDING
	TURNS	DCR (Ω)	TURNS	DCR (Ω)	TURNS
TL306-100	1000	48.9	100	5.6	1
TL306-120	1000	48.9	120	6.8	1
TL306-150	1000	48.9	150	8.3	1
TL306-200	1000	48.9	200	10.7	1
TL306-250	1000	48.9	250	13.5	1
TL306-300	1000	48.9	300	16.4	1
TL306-350	1000	48.9	350	19.0	1
TL306-400	1000	48.9	400	21.7	1

Note: Can be applied without reset winding, add suffix "A" in P/N. e.g. TL306-200A