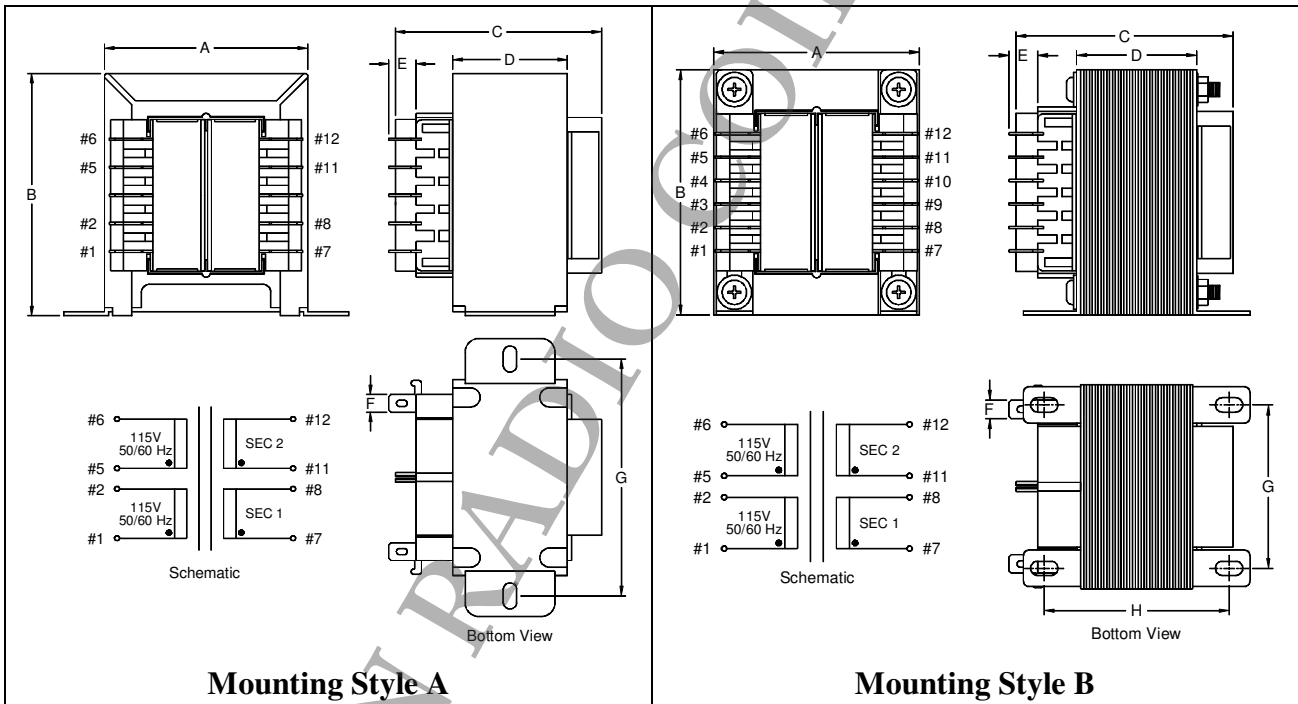


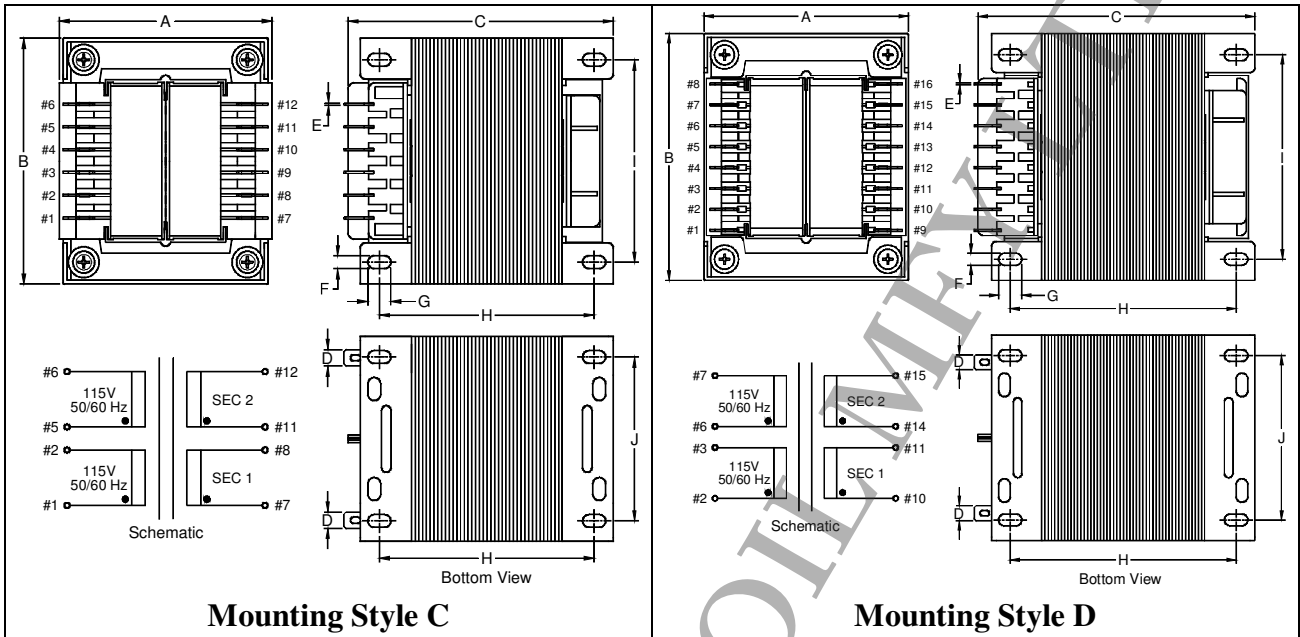
## TL94 Series

- Power – 25VA to 480VA
- Dielectric strength – 4000Vrms
- Primary – Dual primary (115V/230V 50/60Hz)
- Secondary – Series or parallel
- Terminal – Solder lug / quick-connect type terminal
- Insulation class – Class F (155°C)
- Flammability rating – UL94V-0 (bobbin)
- Agency approvals
  - UL: UL506; C-UL: CSA C22.2 #66
  - TUV / CE: EN60950



Product Series	Dimension (mm)								Mtg. Style	Mtg. Screw	Weight (g)
	A	B	C	D	E	F	G	H			
25 VA	50.8	61.0	55.0	28.6	8.5	4.75	60.3	--	A	#6	600
43 VA	58.2	70.2	56.5	28.6	8.5	4.75	71.4	--	A	#6	820
80 VA	64.5	80.0	66.0	35.5	8.5	4.75	50.8	55.5	B	#6	1300
130 VA	72.5	87.0	77.0	41.5	11.0	6.35	57.2	63.5	B	#8	1880
175 VA	81.0	97.0	81.0	41.5	11.0	6.35	64.0	64.0	B	#8	2350
<b>Tolerance</b>	max.	max.	max.	± 1.5	max.	± 0.25	typ.	typ.	--	max.	approx.

- Note:
- 1) The Mtg. Screw size is the maximum allowable screw size.
  - 2) Unused terminals are omitted for standard parts. Unused terminals can be provided upon request.
  - 3) For 25VA & 43VA series, maximum 10 terminals are available.
  - 4) For 80VA to 288VA series, maximum 12 terminals are available.
  - 5) For 312VA to 480VA series, maximum 16 terminals are available.



Product Series	Dimension (mm)										Mtg. Style	Mtg. Screw	Weight (g)
	A	B	C	D	E	F	G	H	I	J			
192 ~ 288 VA	86.0	99.0	107.0	6.35	0.8	5.0	9.0	84.0	79.0	64.0	C	#8	3500
312 ~ 360 VA	90.0	108.0	122.0	6.35	0.8	5.0	10.0	97.0	87.0	70.0	D	#8	4800
384 ~ 480 VA	98.0	117.0	114.0	6.35	0.8	5.0	10.0	90.0	95.0	76.0	D	#8	5150
<b>Tolerance</b>	max.	max.	max.	±0.25	±0.1	typ.	typ.	typ.	typ.	typ.	--	max.	approx.

Product Series	Part Number	Input Voltage (V)	Secondary RMS Rating			
			Series	Parallel		
25VA	TL94-025-010	2 x 115	10V @ 2.5A	5V @ 5.0A		
	TL94-025-012		12.6V @ 2.0A	6.3V @ 4.0A		
	TL94-025-016		16V @ 1.6A	8V @ 3.2A		
	TL94-025-020		20V @ 1.25A	10V @ 2.5A		
	TL94-025-024		24V @ 1.0A	12V @ 2.0A		
	TL94-025-028		28V @ 0.9A	14V @ 1.8A		
	TL94-025-036		36V @ 0.7A	18V @ 1.4A		
	TL94-025-230		230V @ 0.11A	115V @ 0.22A		
	43VA		TL94-043-010	2 x 115	10V @ 4.3A	5V @ 8.6A
			TL94-043-012		12.6V @ 3.4A	6.3V @ 6.8A
TL94-043-016		16V @ 2.7A	8V @ 5.4A			
TL94-043-020		20V @ 2.2A	10V @ 4.4A			
TL94-043-024		24V @ 1.8A	12V @ 3.6A			
TL94-043-028		28V @ 1.5A	14V @ 3.0A			
TL94-043-036		36V @ 1.2A	18V @ 2.4A			
TL94-043-230		230V @ 0.19A	115V @ 0.38A			
80VA		TL94-080-010	2 x 115		10V @ 8.0A	5V @ 16.0A
		TL94-080-012			12.6V @ 6.3A	6.3V @ 12.6A
	TL94-080-016	16V @ 5.0A		8V @ 10.0A		
	TL94-080-020	20V @ 4.0A		10V @ 8.0A		
	TL94-080-024	24V @ 3.3A		12V @ 6.6A		
	TL94-080-028	28V @ 2.8A		14V @ 5.6A		
	TL94-080-036	36V @ 2.2A		18V @ 4.4A		
	TL94-080-230	230V @ 0.35A		115V @ 0.7A		

Product Series	Part Number	Input Voltage (V)	Secondary RMS Rating	
			Series	Parallel
130VA	TL94-130-010	2 x 115	10V @ 13.0A	5V @ 26.0A
	TL94-130-012		12.6V @ 10.3A	6.3V @ 20.6A
	TL94-130-016		16V @ 8.1A	8V @ 16.2A
	TL94-130-020		20V @ 6.5A	10V @ 13.0A
	TL94-130-024		24V @ 5.4A	12V @ 10.8A
	TL94-130-028		28V @ 4.6A	14V @ 9.2A
	TL94-130-036		36V @ 3.6A	18V @ 7.2A
TL94-130-230	230V @ 0.57A	115V @ 1.14A		
175VA	TL94-175-010	2 x 115	10V @ 17.5A	5V @ 35.0A
	TL94-175-012		12.6V @ 14.0A	6.3V @ 28.0A
	TL94-175-016		16V @ 11.0A	8V @ 22.0A
	TL94-175-020		20V @ 8.8A	10V @ 17.6A
	TL94-175-024		24V @ 7.3A	12V @ 14.6A
	TL94-175-028		28V @ 6.25A	14V @ 12.5A
	TL94-175-036		36V @ 4.8A	18V @ 9.6A
TL94-175-230	230V @ 0.76A	115V @ 1.52A		
192VA	TL94-192-012	2 x 115	12.6V @ 15.2A	6.3V @ 30.4A
	TL94-192-016		16V @ 12A	8V @ 24A
	TL94-192-020		20V @ 9.6A	10V @ 19.2A
	TL94-192-024		24V @ 8A	12V @ 16A
	TL94-192-028		28V @ 6.9A	14V @ 13.8A
	TL94-192-036		36V @ 5.3A	18V @ 10.6A
	TL94-192-060		60V @ 3.2A	30V @ 6.4A
TL94-192-230	230V @ 0.83A	115V @ 1.66A		
216VA	TL94-216-012	2 x 115	12.6V @ 17.1A	6.3V @ 34.2A
	TL94-216-016		16V @ 13.5A	8V @ 27A
	TL94-216-020		20V @ 10.8A	10V @ 21.6A
	TL94-216-024		24V @ 9A	12V @ 18A
	TL94-216-028		28V @ 7.7A	14V @ 15.4A
	TL94-216-036		36V @ 6A	18V @ 12A
	TL94-216-060		60V @ 3.6A	30V @ 7.2A
TL94-216-230	230V @ 0.94A	115V @ 1.88A		
240VA	TL94-240-012	2 x 115	12.6V @ 19A	6.3V @ 38A
	TL94-240-016		16V @ 15A	8V @ 30A
	TL94-240-020		20V @ 12A	10V @ 24A
	TL94-240-024		24V @ 10A	12V @ 20A
	TL94-240-028		28V @ 8.6A	14V @ 17.2A
	TL94-240-036		36V @ 6.7A	18V @ 13.4A
	TL94-240-060		60V @ 4A	30V @ 8A
TL94-240-230	230V @ 1.04A	115V @ 2.08A		
264VA	TL94-264-012	2 x 115	12.6V @ 21A	6.3V @ 42A
	TL94-264-016		16V @ 16.5A	8V @ 33A
	TL94-264-020		20V @ 13.2A	10V @ 26.4A
	TL94-264-024		24V @ 11A	12V @ 22A
	TL94-264-028		28V @ 9.4A	14V @ 18.8A
	TL94-264-036		36V @ 7.3A	18V @ 14.6A
	TL94-264-060		60V @ 4.4A	30V @ 8.8A
TL94-264-230	230V @ 1.14A	115V @ 2.28A		
288VA	TL94-288-012	2 x 115	12.6V @ 22.9A	6.3V @ 45.8A
	TL94-288-016		16V @ 18A	8V @ 36A
	TL94-288-020		20V @ 14.4A	10V @ 28.8A
	TL94-288-024		24V @ 12A	12V @ 24A
	TL94-288-028		28V @ 10.3A	14V @ 20.6A
	TL94-288-036		36V @ 8A	18V @ 16A
	TL94-288-060		60V @ 4.8A	30V @ 9.6A
TL94-288-230	230V @ 1.25A	115V @ 2.5A		

Product Series	Part Number	Input Voltage (V)	Secondary RMS Rating	
			Series	Parallel
312VA	TL94-312-016	2 x 115	16V @ 19.5A	8V @ 39A
	TL94-312-020		20V @ 15.6A	10V @ 31.2A
	TL94-312-024		24V @ 13A	12V @ 26A
	TL94-312-028		28V @ 11.1A	14V @ 22.2A
	TL94-312-036		36V @ 8.7A	18V @ 17.4A
	TL94-312-048		48V @ 6.5A	24V @ 13A
	TL94-312-060		60V @ 5.2A	30V @ 10.4A
TL94-312-230	230V @ 1.36A	115V @ 2.72A		
336VA	TL94-336-016	2 x 115	16V @ 21A	8V @ 42A
	TL94-336-020		20V @ 16.8A	10V @ 33.6A
	TL94-336-024		24V @ 14A	12V @ 28A
	TL94-336-028		28V @ 12A	14V @ 24A
	TL94-336-036		36V @ 9.3A	18V @ 18.6A
	TL94-336-048		48V @ 7A	24V @ 14A
	TL94-336-060		60V @ 5.6A	30V @ 11.2A
TL94-336-230	230V @ 1.46A	115V @ 2.92A		
360VA	TL94-360-020	2 x 115	20V @ 18A	10V @ 36A
	TL94-360-024		24V @ 15A	12V @ 30A
	TL94-360-028		28V @ 12.9A	14V @ 25.8A
	TL94-360-036		36V @ 10A	18V @ 20A
	TL94-360-048		48V @ 7.5A	24V @ 15A
	TL94-360-060		60V @ 6A	30V @ 12A
	TL94-360-230		230V @ 1.57A	115V @ 3.14A
384VA	TL94-384-020	2 x 115	20V @ 19.2A	10V @ 38.4A
	TL94-384-024		24V @ 16A	12V @ 32A
	TL94-384-028		28V @ 13.7A	14V @ 27.4A
	TL94-384-036		36V @ 10.7A	18V @ 21.4A
	TL94-384-048		48V @ 8A	24V @ 16A
	TL94-384-060		60V @ 6.4A	30V @ 12.8A
	TL94-384-230		230V @ 1.67A	115V @ 3.34A
408VA	TL94-408-020	2 x 115	20V @ 20.4A	10V @ 40.8A
	TL94-408-024		24V @ 17A	12V @ 34A
	TL94-408-028		28V @ 14.6A	14V @ 29.2A
	TL94-408-036		36V @ 11.3A	18V @ 22.6A
	TL94-408-048		48V @ 8.5A	24V @ 17A
	TL94-408-060		60V @ 6.8A	30V @ 13.6A
	TL94-408-230		230V @ 1.77A	115V @ 3.54A
432VA	TL94-432-024	2 x 115	24V @ 18A	12V @ 36A
	TL94-432-028		28V @ 15.4A	14V @ 30.8A
	TL94-432-036		36V @ 12A	18V @ 24A
	TL94-432-048		48V @ 9A	24V @ 18A
	TL94-432-060		60V @ 7.2A	30V @ 14.4A
	TL94-432-230		230V @ 1.88A	115V @ 3.76A
	456VA		TL94-456-024	2 x 115
TL94-456-028		28V @ 16.3A	14V @ 32.6A	
TL94-456-036		36V @ 12.7A	18V @ 25.4A	
TL94-456-048		48V @ 9.5A	24V @ 19A	
TL94-456-060		60V @ 7.6A	30V @ 15.2A	
TL94-456-230		230V @ 1.98A	115V @ 3.96A	
480VA		TL94-480-024 (*)	2 x 115	
	TL94-480-028 (*)	28V @ 17.1A		14V @ 34.2A
	TL94-480-036 (*)	36V @ 13.3A		18V @ 26.6A
	TL94-480-048 (*)	48V @ 10A		24V @ 20A
	TL94-480-060 (*)	60V @ 8A		30V @ 16A
	TL94-480-230 (*)	230V @ 2.09A		115V @ 4.18A

Note: (\*) The 480VA series is not UL recognized.