

TL95 Series

- Power – 2.4VA to 100VA
- Dielectric strength – 2500Vrms (P – S)
- Primary – Dual primary (115V/230V 50/60Hz)
- Secondary – Center-tapped
- Insulation class – Class F (155°C)
- Terminals – Solder Lug / Quick-Connect Terminal or Leadout Cable Type
- Agency approvals – UL506, CSA C22.2 #66

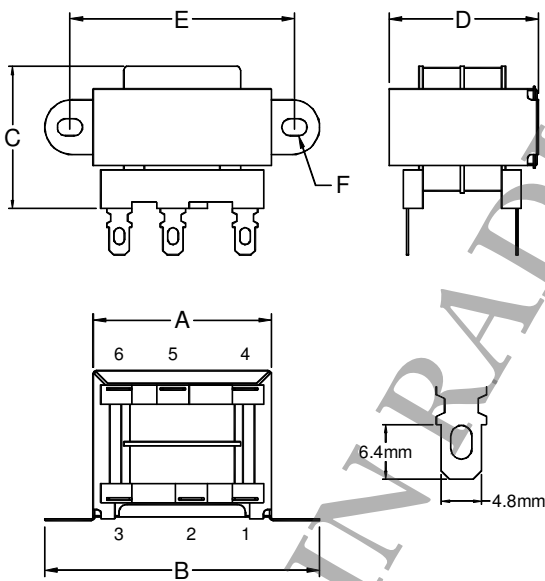


Fig. 1A

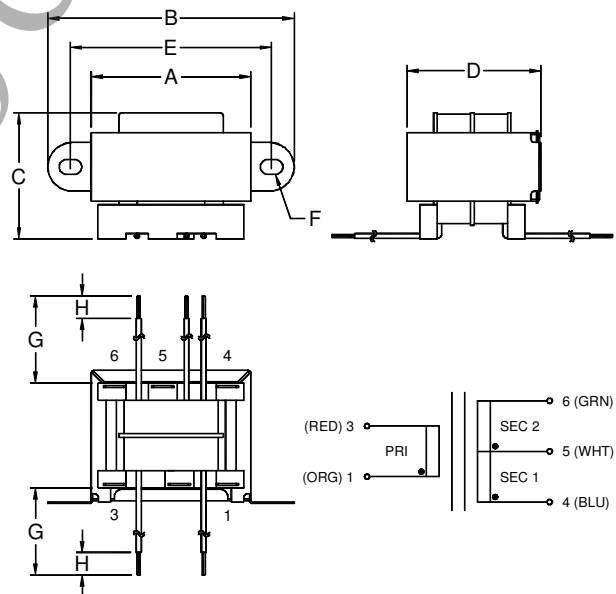


Fig. 1B

Product Series	Dimension (mm)								Fig.	Weight (g)
	A	B	C	D	E	F	G	H		
2.4 VA	37.5	57.5	32.0	33.5	46.5	Ø4 × 7	150.0	8.0	1A, 1B	115
Tolerance	max.	max.	max.	max.	± 2.0	± 1.0	± 10.0	± 2.0	--	approx.

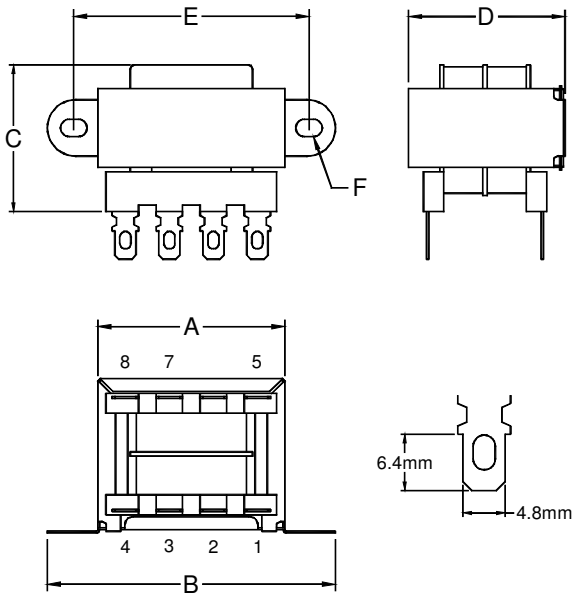


Fig. 2A

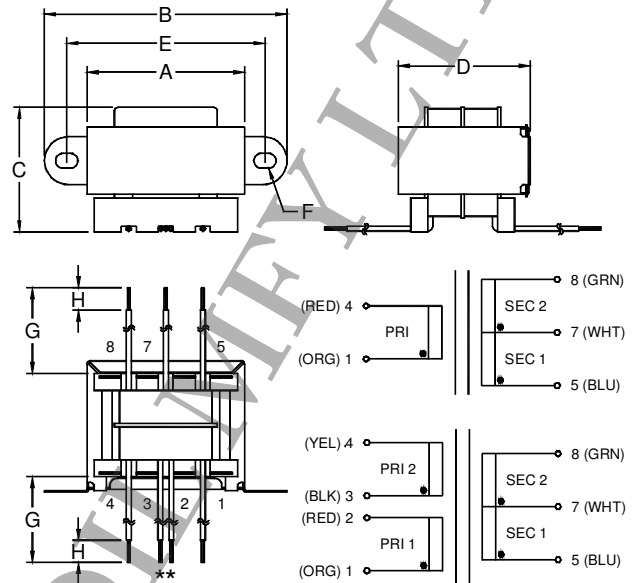


Fig. 2B

Product Series	Dimension (mm)								Fig.	Weight (g)
	A	B	C	D	E	F	G	H		
6 VA	43.5	66.5	35.5	37.0	53.5	Ø4 × 6	150.0	8.0	2A, 2B	195
12 VA	52.0	73.0	38.5	45.0	58.5	Ø4 × 6	150.0	8.0	2A, 2B	320
Tolerance	max.	max.	max.	max.	± 2.0	± 1.0	± 10.0	± 2.0	--	approx.

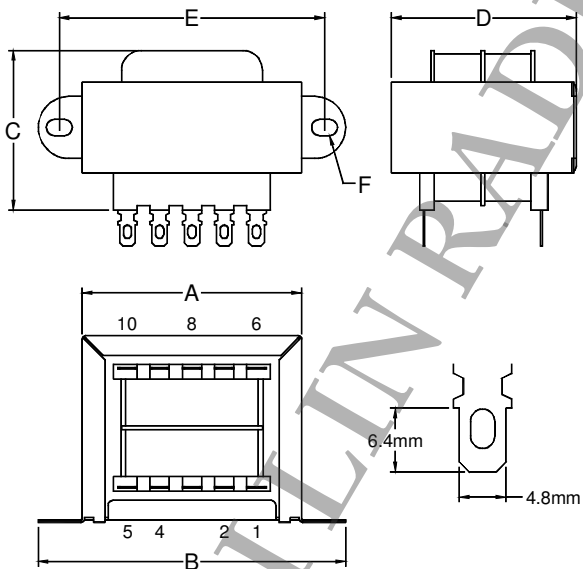


Fig. 3A

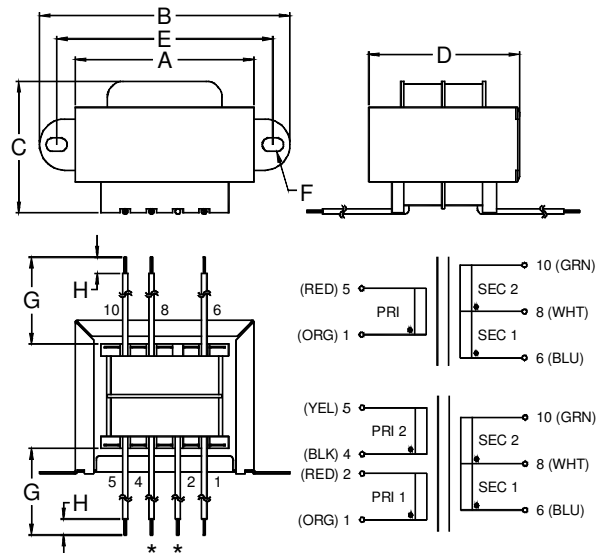


Fig. 3B

Product Series	Dimension (mm)								Fig.	Weight (g)
	A	B	C	D	E	F	G	H		
30 VA	61.0	86.0	47.0	53.0	70.5	Ø4.5 × 8	150.0	8.0	3A, 3B	300
56 VA	69.5	98.0	50.0	60.0	83.0	Ø4.7 × 8	150.0	8.0	3A, 3B	810
100 VA	80.0	105.0	59.5	69.5	91.0	Ø5 × 8	150.0	8.0	3A, 3B	1300
Tolerance	max.	max.	max.	max.	± 2.0	± 1.0	± 10.0	± 2.0	--	approx.

Note: * These 2 marked primary cables are only available for the dual input models.

Product Series	Part Number		Output Voltage (rms)	Output Current (rms)	Part Number		Output Voltage (rms)	Output Current (rms)
	Single 115V	Dual 115 / 230V			Single 115V	Dual 115 / 230V		
2.4 VA	TL95S-002-010X	NOT AVAILABLE	10V C.T. @ 0.25A		TL95S-002-028X	NOT AVAILABLE	28V C.T. @ 0.085A	
	TL95S-002-012X		12.6V C.T. @ 0.20A		TL95S-002-036X		36V C.T. @ 0.065A	
	TL95S-002-016X		16V C.T. @ 0.15A		TL95S-002-048X		48V C.T. @ 0.05A	
	TL95S-002-020X		20V C.T. @ 0.12A		TL95S-002-056X		56V C.T. @ 0.045A	
	TL95S-002-024X		24V C.T. @ 0.10A		TL95S-002-120X		120V C.T. @ 0.02A	
6 VA	TL95S-006-010X	TL95D-006-010X	10V C.T. @ 0.60A		TL95S-006-028X	TL95D-006-028X	28V C.T. @ 0.20A	
	TL95S-006-012X	TL95D-006-012X	12.6V C.T. @ 0.50A		TL95S-006-036X	TL95D-006-036X	36V C.T. @ 0.17A	
	TL95S-006-016X	TL95D-006-016X	16V C.T. @ 0.40A		TL95S-006-048X	TL95D-006-048X	48V C.T. @ 0.125A	
	TL95S-006-020X	TL95D-006-020X	20V C.T. @ 0.30A		TL95S-006-056X	TL95D-006-056X	56V C.T. @ 0.11A	
	TL95S-006-024X	TL95D-006-024X	24V C.T. @ 0.25A		TL95S-006-120X	TL95D-006-120X	120V C.T. @ 0.05A	
12 VA	TL95S-012-010X	TL95D-012-010X	10V C.T. @ 1.2A		TL95S-012-028X	TL95D-012-028X	28V C.T. @ 0.42A	
	TL95S-012-012X	TL95D-012-012X	12.6V C.T. @ 1.0A		TL95S-012-036X	TL95D-012-036X	36V C.T. @ 0.35A	
	TL95S-012-016X	TL95D-012-016X	16V C.T. @ 0.8A		TL95S-012-048X	TL95D-012-048X	48V C.T. @ 0.25A	
	TL95S-012-020X	TL95D-012-020X	20V C.T. @ 0.6A		TL95S-012-056X	TL95D-012-056X	56V C.T. @ 0.22A	
	TL95S-012-024X	TL95D-012-024X	24V C.T. @ 0.5A		TL95S-012-120X	TL95D-012-120X	120V C.T. @ 0.10A	
30 VA	TL95S-030-010X	TL95D-030-010X	10V C.T. @ 3.0A		TL95S-030-028X	TL95D-030-028X	28V C.T. @ 1.10A	
	TL95S-030-012X	TL95D-030-012X	12.6V C.T. @ 2.5A		TL95S-030-036X	TL95D-030-036X	36V C.T. @ 0.85A	
	TL95S-030-016X	TL95D-030-016X	16V C.T. @ 2.0A		TL95S-030-048X	TL95D-030-048X	48V C.T. @ 0.63A	
	TL95S-030-020X	TL95D-030-020X	20V C.T. @ 1.5A		TL95S-030-056X	TL95D-030-056X	56V C.T. @ 0.54A	
	TL95S-030-024X	TL95D-030-024X	24V C.T. @ 1.25A		TL95S-030-120X	TL95D-030-120X	120V C.T. @ 0.25A	
56 VA	TL95S-056-010X	TL95D-056-010X	10V C.T. @ 5.0A		TL95S-056-028X	TL95D-056-028X	28V C.T. @ 2.0A	
	TL95S-056-012X	TL95D-056-012X	12.6V C.T. @ 3.96A		TL95S-056-036X	TL95D-056-036X	36V C.T. @ 1.5A	
	TL95S-056-016X	TL95D-056-016X	16V C.T. @ 3.5A		TL95S-056-048X	TL95D-056-048X	48V C.T. @ 1.2A	
	TL95S-056-020X	TL95D-056-020X	20V C.T. @ 2.8A		TL95S-056-056X	TL95D-056-056X	56V C.T. @ 1.0A	
	TL95S-056-024X	TL95D-056-024X	24V C.T. @ 2.4A		TL95S-056-120X	TL95D-056-120X	120V C.T. @ 0.50A	
100 VA	TL95S-100-010X	TL95D-100-010X	10V C.T. @ 10.0A		TL95S-100-028X	TL95D-100-028X	28V C.T. @ 3.6A	
	TL95S-100-012X	TL95D-100-012X	12.6V C.T. @ 8.0A		TL95S-100-036X	TL95D-100-036X	36V C.T. @ 2.8A	
	TL95S-100-016X	TL95D-100-016X	16V C.T. @ 6.25A		TL95S-100-048X	TL95D-100-048X	48V C.T. @ 2.0A	
	TL95S-100-020X	TL95D-100-020X	20V C.T. @ 5.0A		TL95S-100-056X	TL95D-100-056X	56V C.T. @ 1.8A	
	TL95S-100-024X	TL95D-100-024X	24V C.T. @ 4.0A		TL95S-100-120X	TL95D-100-120X	120V C.T. @ 0.85A	

Part number suffix X = T represents the secondaries with quick-connect terminals
 = L represents the secondaries terminated with leadout cables