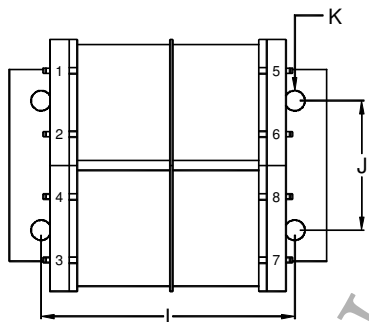
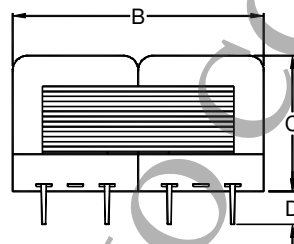
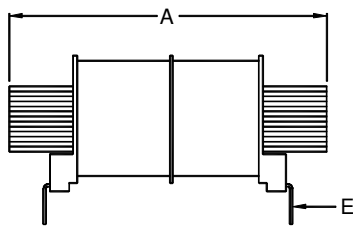
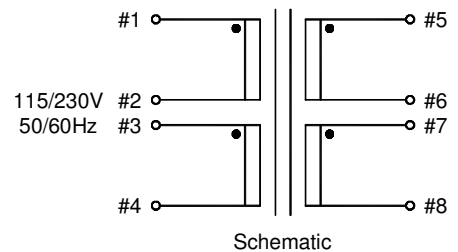
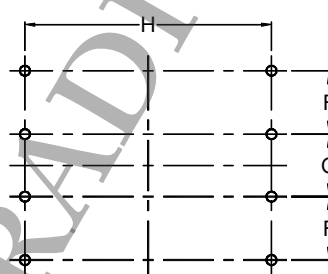


TL66 Series

- Power – 2VA to 48VA
- Dielectric strength – 1500Vrms
- Primary – Dual primary (115V/230V 50/60Hz)
- Secondary – Series or parallel
- Insulation class – Class F (155°C)
- Agency approvals – UL506, CSA C22.2 #66



Bottom View



Product Series	Dimension (mm)											Weight (g)
	A	B	C	D	E	F	G	H	I	J	K	
2 VA	48.5	40.0	17.5	5.5	0.5x1.0	9.5	9.5	40.6	41.24	22.2	Ø2.8	95
6 VA	48.5	40.0	22.6	5.5	0.5x1.0	9.5	9.5	40.6	41.24	22.2	Ø2.8	135
12 VA	64.5	51.8	28.0	5.5	0.5x1.0	12.7	12.7	50.8	50.8	25.7	Ø3.5	300
48 VA	81.0	64.5	35.4	6.35	1.0x1.0	15.24	16.8	55.4	64.0	32.0	Ø4.5	630
Tolerance	max.	max.	max.	±1.0	±0.2	±0.3	±0.3	±0.5	±0.5	±0.5	max.	approx.

Note : Dimension " E " is pin size, and dimension " K " is the maximum allowable screw size.

Product Series	Part Number	Primary (V)	Secondary RMS Rating	
			Series	Parallel
2 VA	TL66-2F-10	2 x 115	10V @ 0.25A	5V @ 0.5A
	TL66-2F-12		12.6V @ 0.2A	6.3V @ 0.4A
	TL66-2F-16		16V @ 0.15A	8V @ 0.3A
	TL66-2F-20		20V @ 0.12A	10V @ 0.25A
	TL66-2F-24		24V @ 0.1A	12V @ 0.2A
	TL66-2F-30		30V @ 0.085A	15V @ 0.17A
	TL66-2F-34		34V @ 0.075A	17V @ 0.15A
	TL66-2F-40		40V @ 0.06A	20V @ 0.12A
	TL66-2F-56		56V @ 0.045A	28V @ 0.09A
	TL66-2F-88		88V @ 0.028A	44V @ 0.056A
	TL66-2F-120		120V @ 0.02A	60V @ 0.04A
	TL66-2F-230		230V @ 0.01A	115V @ 0.02A
	6 VA		TL66-6F-10	2 x 115
TL66-6F-12		12.6V @ 0.45A	6.3V @ 0.9A	
TL66-6F-16		16V @ 0.35A	8V @ 0.7A	
TL66-6F-20		20V @ 0.3A	10V @ 0.6A	
TL66-6F-24		24V @ 0.25A	12V @ 0.5A	
TL66-6F-30		30V @ 0.2A	15V @ 0.4A	
TL66-6F-34		34V @ 0.17A	17V @ 0.34A	
TL66-6F-40		40V @ 0.15A	20V @ 0.3A	
TL66-6F-56		56V @ 0.1A	28V @ 0.2A	
TL66-6F-88		88V @ 0.065A	44V @ 0.13A	
TL66-6F-120		120V @ 0.05A	60V @ 0.1A	
TL66-6F-230		230V @ 0.025A	115V @ 0.05A	
12 VA		TL66-12F-10	2 x 115	
	TL66-12F-12	12.6V @ 0.9A		6.3V @ 1.8A
	TL66-12F-16	16V @ 0.7A		8V @ 1.4A
	TL66-12F-20	20V @ 0.6A		10V @ 1.2A
	TL66-12F-24	24V @ 0.5A		12V @ 1A
	TL66-12F-30	30V @ 0.4A		15V @ 0.8A
	TL66-12F-34	34V @ 0.34A		17V @ 0.68A
	TL66-12F-40	40V @ 0.3A		20V @ 0.6A
	TL66-12F-56	56V @ 0.2A		28V @ 0.4A
	TL66-12F-88	88V @ 0.13A		44V @ 0.26A
	TL66-12F-120	120V @ 0.1A		60V @ 0.2A
	TL66-12F-230	230V @ 0.05A		115V @ 0.1A
	48 VA	TL66-48F-10		2 x 115
TL66-48F-12		12.6V @ 3.8A	6.3V @ 7.6A	
TL66-48F-16		16V @ 3A	8V @ 6A	
TL66-48F-20		20V @ 2.4A	10V @ 4.8A	
TL66-48F-24		24V @ 2A	12V @ 4A	
TL66-48F-30		30V @ 1.6A	15V @ 3.2A	
TL66-48F-34		34V @ 1.4A	17V @ 2.8A	
TL66-48F-40		40V @ 1.2A	20V @ 2.4A	
TL66-48F-56		56V @ 0.85A	28V @ 1.7A	