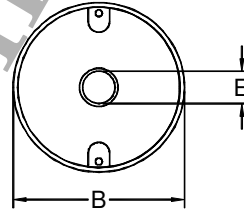
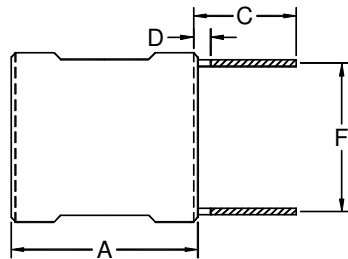


TL90 Series

- High saturation materials, ideal for applications requiring both high-current rating and small size
- Used in switching regulators, power supplies, SCR and Triac controls, RFI suppression and filters
- Finished with UL-VW-1 rated sleeve
- With center hole for mechanical mounting
- Custom-made chokes are available upon request



| Product Series | Dimension (mm) | | | | | | Weight (g) |
|----------------|----------------|------|------|------|------|------|------------|
| | A | B | C | D | E | F | |
| TL90-1 | 23.0 | 16.5 | 12.0 | 1.5 | Ø2.8 | 12.5 | 13 |
| TL90-2 | 23.0 | 21.0 | 12.0 | 1.5 | Ø3.5 | 15.5 | 20 |
| TL90-3 | 23.0 | 28.0 | 12.0 | 1.5 | Ø4.5 | 19.5 | 40 |
| Tolerance | max. | max. | ±2.0 | max. | min. | ref. | approx. |

| Part Number | Inductance (µH) | Test Frequency | DCR (mΩ, max.) | Rated Current (A DC) | Part Number | Inductance (µH) | Test Frequency | DCR (mΩ, max.) | Rated Current (A DC) |
|-------------|-----------------|----------------|----------------|----------------------|-------------|-----------------|----------------|----------------|----------------------|
| TL90-1-102M | 1.0 ± 20% | 1 kHz | 3 | 9.0 | TL90-1-333K | 33 ± 10% | 1 kHz | 40 | 4.0 |
| TL90-1-152M | 1.5 ± 20% | 1 kHz | 4 | 9.0 | TL90-1-393K | 39 ± 10% | 1 kHz | 50 | 4.0 |
| TL90-1-222M | 2.2 ± 20% | 1 kHz | 5 | 9.0 | TL90-1-473K | 47 ± 10% | 1 kHz | 60 | 2.8 |
| TL90-1-272M | 2.7 ± 20% | 1 kHz | 5 | 9.0 | TL90-1-563K | 56 ± 10% | 1 kHz | 70 | 2.8 |
| TL90-1-332M | 3.3 ± 20% | 1 kHz | 5 | 9.0 | TL90-1-683K | 68 ± 10% | 1 kHz | 80 | 2.8 |
| TL90-1-392M | 3.9 ± 20% | 1 kHz | 6 | 9.0 | TL90-1-823K | 82 ± 10% | 1 kHz | 80 | 2.8 |
| TL90-1-472M | 4.7 ± 20% | 1 kHz | 7 | 9.0 | TL90-1-104K | 100 ± 10% | 1 kHz | 100 | 2.8 |
| TL90-1-562M | 5.6 ± 20% | 1 kHz | 7 | 9.0 | TL90-1-124K | 120 ± 10% | 1 kHz | 130 | 2.0 |
| TL90-1-682M | 6.8 ± 20% | 1 kHz | 8 | 9.0 | TL90-1-154K | 150 ± 10% | 1 kHz | 180 | 1.6 |
| TL90-1-822M | 8.2 ± 20% | 1 kHz | 9 | 9.0 | TL90-1-184K | 180 ± 10% | 1 kHz | 220 | 1.6 |
| TL90-1-103K | 10 ± 10% | 1 kHz | 10 | 9.0 | TL90-1-224K | 220 ± 10% | 1 kHz | 240 | 1.6 |
| TL90-1-123K | 12 ± 10% | 1 kHz | 10 | 9.0 | TL90-1-274K | 270 ± 10% | 1 kHz | 300 | 1.6 |
| TL90-1-153K | 15 ± 10% | 1 kHz | 20 | 7.2 | TL90-1-334K | 330 ± 10% | 1 kHz | 340 | 1.3 |
| TL90-1-183K | 18 ± 10% | 1 kHz | 20 | 7.2 | TL90-1-394K | 390 ± 10% | 1 kHz | 460 | 1.0 |
| TL90-1-223K | 22 ± 10% | 1 kHz | 30 | 5.5 | TL90-1-474K | 470 ± 10% | 1 kHz | 640 | 0.8 |
| TL90-1-273K | 27 ± 10% | 1 kHz | 30 | 4.5 | TL90-1-564K | 560 ± 10% | 1 kHz | 700 | 0.8 |

| Part Number | Inductance (μH) | Test Frequency | DCR (mΩ, max.) | Rated Current (A DC) | Part Number | Inductance (μH) | Test Frequency | DCR (mΩ, max.) | Rated Current (A DC) |
|-------------|-----------------|----------------|----------------|----------------------|-------------|-----------------|----------------|----------------|----------------------|
| TL90-2-102M | 1.0 ± 20% | 1 kHz | 3 | 11 | TL90-3-152M | 1.5 ± 20% | 1 kHz | 3 | 21 |
| TL90-2-222M | 2.2 ± 20% | 1 kHz | 4 | 11 | TL90-3-222M | 2.2 ± 20% | 1 kHz | 3 | 21 |
| TL90-2-332M | 3.3 ± 20% | 1 kHz | 5 | 11 | TL90-3-332M | 3.3 ± 20% | 1 kHz | 3 | 21 |
| TL90-2-392M | 3.9 ± 20% | 1 kHz | 5 | 11 | TL90-3-472M | 4.7 ± 20% | 1 kHz | 3 | 21 |
| TL90-2-472M | 4.7 ± 20% | 1 kHz | 5 | 11 | TL90-3-682M | 6.8 ± 20% | 1 kHz | 4 | 21 |
| TL90-2-562M | 5.6 ± 20% | 1 kHz | 6 | 11 | TL90-3-822M | 8.2 ± 20% | 1 kHz | 4 | 21 |
| TL90-2-682M | 6.8 ± 20% | 1 kHz | 7 | 11 | TL90-3-103M | 10 ± 20% | 1 kHz | 6 | 17 |
| TL90-2-822M | 8.2 ± 20% | 1 kHz | 7 | 11 | TL90-3-123M | 12 ± 20% | 1 kHz | 8 | 13 |
| TL90-2-103M | 10 ± 20% | 1 kHz | 9 | 11 | TL90-3-153K | 15 ± 10% | 1 kHz | 9 | 13 |
| TL90-2-123K | 12 ± 10% | 1 kHz | 9 | 11 | TL90-3-183K | 18 ± 10% | 1 kHz | 10 | 13 |
| TL90-2-153K | 15 ± 10% | 1 kHz | 10 | 9.0 | TL90-3-223K | 22 ± 10% | 1 kHz | 10 | 13 |
| TL90-2-183K | 18 ± 10% | 1 kHz | 20 | 7.2 | TL90-3-273K | 27 ± 10% | 1 kHz | 10 | 13 |
| TL90-2-223K | 22 ± 10% | 1 kHz | 20 | 7.2 | TL90-3-333K | 33 ± 10% | 1 kHz | 20 | 13 |
| TL90-2-273K | 27 ± 10% | 1 kHz | 30 | 5.5 | TL90-3-393K | 39 ± 10% | 1 kHz | 20 | 11 |
| TL90-2-333K | 33 ± 10% | 1 kHz | 30 | 5.5 | TL90-3-473K | 47 ± 10% | 1 kHz | 20 | 9.0 |
| TL90-2-393K | 39 ± 10% | 1 kHz | 30 | 5.5 | TL90-3-563K | 56 ± 10% | 1 kHz | 30 | 9.0 |
| TL90-2-473K | 47 ± 10% | 1 kHz | 40 | 5.5 | TL90-3-683K | 68 ± 10% | 1 kHz | 30 | 9.0 |
| TL90-2-563K | 56 ± 10% | 1 kHz | 40 | 5.5 | TL90-3-823K | 82 ± 10% | 1 kHz | 30 | 9.0 |
| TL90-2-683K | 68 ± 10% | 1 kHz | 50 | 4.8 | TL90-3-104K | 100 ± 10% | 1 kHz | 30 | 9.0 |
| TL90-2-823K | 82 ± 10% | 1 kHz | 60 | 4.8 | TL90-3-124K | 120 ± 10% | 1 kHz | 50 | 7.2 |
| TL90-2-104K | 100 ± 10% | 1 kHz | 80 | 4.0 | TL90-3-154K | 150 ± 10% | 1 kHz | 60 | 5.5 |
| TL90-2-124K | 120 ± 10% | 1 kHz | 90 | 4.0 | TL90-3-184K | 180 ± 10% | 1 kHz | 70 | 5.5 |
| TL90-2-154K | 150 ± 10% | 1 kHz | 100 | 4.0 | TL90-3-224K | 220 ± 10% | 1 kHz | 80 | 5.5 |
| TL90-2-184K | 180 ± 10% | 1 kHz | 110 | 4.0 | TL90-3-274K | 270 ± 10% | 1 kHz | 110 | 4.5 |
| TL90-2-224K | 220 ± 10% | 1 kHz | 150 | 2.8 | TL90-3-334K | 330 ± 10% | 1 kHz | 120 | 4.5 |
| TL90-2-274K | 270 ± 10% | 1 kHz | 210 | 2.0 | TL90-3-394K | 390 ± 10% | 1 kHz | 170 | 4.0 |
| TL90-2-334K | 330 ± 10% | 1 kHz | 310 | 1.6 | TL90-3-474K | 470 ± 10% | 1 kHz | 190 | 4.0 |
| TL90-2-394K | 390 ± 10% | 1 kHz | 320 | 1.6 | TL90-3-564K | 560 ± 10% | 1 kHz | 210 | 4.0 |
| TL90-2-474K | 470 ± 10% | 1 kHz | 360 | 1.6 | TL90-3-684K | 680 ± 10% | 1 kHz | 260 | 2.8 |
| TL90-2-564K | 560 ± 10% | 1 kHz | 390 | 1.6 | TL90-3-824K | 820 ± 10% | 1 kHz | 290 | 2.8 |
| TL90-2-684K | 680 ± 10% | 1 kHz | 430 | 1.6 | TL90-3-105K | 1000 ± 10% | 1 kHz | 430 | 2.0 |
| TL90-2-824K | 820 ± 10% | 1 kHz | 590 | 1.3 | TL90-3-125K | 1200 ± 10% | 1 kHz | 460 | 2.0 |
| TL90-2-105K | 1000 ± 10% | 1 kHz | 820 | 1.0 | TL90-3-155K | 1500 ± 10% | 1 kHz | 520 | 2.0 |
| TL90-2-125K | 1200 ± 10% | 1 kHz | 1100 | 0.8 | TL90-3-185K | 1800 ± 10% | 1 kHz | 710 | 1.6 |
| TL90-2-155K | 1500 ± 10% | 1 kHz | 1300 | 0.8 | TL90-3-225K | 2200 ± 10% | 1 kHz | 1000 | 1.3 |
| TL90-2-185K | 1800 ± 10% | 1 kHz | 1400 | 0.8 | TL90-3-275K | 2700 ± 10% | 1 kHz | 1100 | 1.3 |
| TL90-2-225K | 2200 ± 10% | 1 kHz | 1500 | 0.8 | TL90-3-335K | 3300 ± 10% | 1 kHz | 1300 | 1.3 |
| | | | | | TL90-3-395K | 3900 ± 10% | 1 kHz | 1700 | 1.0 |
| | | | | | TL90-3-475K | 4700 ± 10% | 1 kHz | 1900 | 1.0 |

Part number suffix : M - represents the Inductance Tolerance of ± 20%

K - represents the Inductance Tolerance of ± 10%