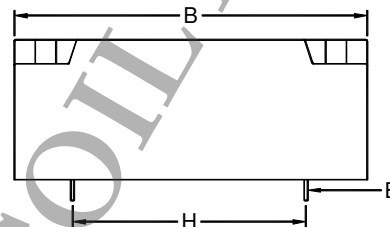
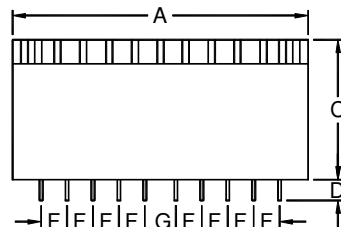


Type UI39

- Power – 10VA to 30VA
- Temperature class – Class B (130°C)
- Ambient temperature – 40°C
- Dielectric strength – 4000Vrms
- Potted under vacuum
- Fail-safe
- Agency approvals
 - TUV / CE: EN61558 / EN60950
 - UL: UL506
 - C-UL: CSA C22.2 #66



| Product Series | Dimension (mm) | | | | | | | | Weight (g) |
|------------------|----------------|------|------|------|--------|------|------|------|------------|
| | A | B | C | D | E | F | G | H | |
| 10VA | 57.0 | 68.0 | 22.0 | 4.0 | SQ0.64 | 5.0 | 6.0 | 45.0 | 260 |
| 14VA | 57.0 | 68.0 | 24.0 | 4.0 | SQ0.64 | 5.0 | 6.0 | 45.0 | 310 |
| 18VA | 57.0 | 68.0 | 27.0 | 4.0 | SQ0.64 | 5.0 | 6.0 | 45.0 | 350 |
| 24VA | 57.0 | 68.0 | 31.0 | 4.0 | SQ0.64 | 5.0 | 6.0 | 45.0 | 435 |
| 30VA | 57.0 | 68.0 | 35.0 | 4.0 | SQ0.64 | 5.0 | 6.0 | 45.0 | 515 |
| Tolerance | ±1.0 | ±1.0 | ±1.0 | ±1.0 | ±0.1 | ±0.2 | ±0.2 | ±0.5 | approx. |

Note: Unused pins are omitted for standard parts. Unused pins can be provided upon request.

Schematics

| | TL39E SERIES | TL39U SERIES |
|--------|---|---|
| | | |
| Input | 115V 60Hz (Pin 1 – Pin 6) (Pins 1, 9 short; Pins 4, 6 short); OR 230V 50Hz (Pin 1 – Pin 6) (Pins 4, 9 short) | 115V 60Hz (Pin 1 – Pin 4) (Pins 1, 3 short; Pins 2, 4 short); OR 230V 50Hz (Pin 1 – Pin 4) (Pins 2, 3 short) |
| Output | In Series (Pin 12 – Pin 17) (Pins 14, 19 short); OR In Parallel (Pin 12 – Pin 17) (Pins 12, 19 short; Pins 14, 17 short) | In Series (Pin 5 – Pin 8) (Pins 6, 7 short); OR In Parallel (Pin 5 – Pin 8) (Pins 5, 7 short; Pins 6, 8 short) |

| Product Series | Primary (V) | Part Number | | Secondary Rating | | Agency Approval |
|----------------|----------------|----------------|----------------|------------------|----------------|----------------------------|
| | | TYPE I | TYPE II | (V) | (mA) | |
| 10VA | 2 x 115 | TL39E-005-1000 | TL39U-005-1000 | 2 x 5 | 1000 | UL506 C-UL TUV CE |
| | | TL39E-006-0833 | TL39U-006-0833 | 2 x 6 | 833 | |
| | | TL39E-008-0625 | TL39U-008-0625 | 2 x 8 | 625 | |
| | | TL39E-009-0555 | TL39U-009-0555 | 2 x 9 | 555 | |
| | | TL39E-010-0500 | TL39U-010-0500 | 2 x 10 | 500 | |
| | | TL39E-012-0416 | TL39U-012-0416 | 2 x 12 | 416 | |
| | | TL39E-015-0333 | TL39U-015-0333 | 2 x 15 | 333 | |
| | | TL39E-017-0294 | TL39U-017-0294 | 2 x 17 | 294 | |
| | | TL39E-018-0277 | TL39U-018-0277 | 2 x 18 | 277 | |
| | | TL39E-020-0250 | TL39U-020-0250 | 2 x 20 | 250 | |
| | | TL39E-021-0238 | TL39U-021-0238 | 2 x 21 | 238 | |
| | | TL39E-024-0208 | TL39U-024-0208 | 2 x 24 | 208 | |
| | | TL39E-028-0179 | TL39U-028-0179 | 2 x 28 | 179 | |
| | | TL39E-115-0043 | TL39U-115-0043 | 2 x 115 | 43 | |
| | | 14VA | 2 x 115 | TL39E-005-1400 | TL39U-005-1400 | |
| TL39E-006-1167 | TL39U-006-1167 | | | 2 x 6 | 1167 | |
| TL39E-008-0875 | TL39U-008-0875 | | | 2 x 8 | 875 | |
| TL39E-009-0777 | TL39U-009-0777 | | | 2 x 9 | 777 | |
| TL39E-010-0700 | TL39U-010-0700 | | | 2 x 10 | 700 | |
| TL39E-012-0583 | TL39U-012-0583 | | | 2 x 12 | 583 | |
| TL39E-015-0466 | TL39U-015-0466 | | | 2 x 15 | 466 | |
| TL39E-017-0412 | TL39U-017-0412 | | | 2 x 17 | 412 | |
| TL39E-018-0388 | TL39U-018-0388 | | | 2 x 18 | 388 | |
| TL39E-020-0350 | TL39U-020-0350 | | | 2 x 20 | 350 | |
| TL39E-021-0333 | TL39U-021-0333 | | | 2 x 21 | 333 | |
| TL39E-024-0291 | TL39U-024-0291 | | | 2 x 24 | 291 | |
| TL39E-028-0250 | TL39U-028-0250 | | | 2 x 28 | 250 | |
| TL39E-115-0060 | TL39U-115-0060 | | | 2 x 115 | 60 | |
| 18VA | 2 x 115 | | | TL39E-005-1800 | TL39U-005-1800 | 2 x 5 |
| | | TL39E-006-1500 | TL39U-006-1500 | 2 x 6 | 1500 | |
| | | TL39E-008-1125 | TL39U-008-1125 | 2 x 8 | 1125 | |
| | | TL39E-009-1000 | TL39U-009-1000 | 2 x 9 | 1000 | |
| | | TL39E-010-0900 | TL39U-010-0900 | 2 x 10 | 900 | |
| | | TL39E-012-0750 | TL39U-012-0750 | 2 x 12 | 750 | |
| | | TL39E-015-0600 | TL39U-015-0600 | 2 x 15 | 600 | |
| | | TL39E-017-0529 | TL39U-017-0529 | 2 x 17 | 529 | |
| | | TL39E-018-0500 | TL39U-018-0500 | 2 x 18 | 500 | |
| | | TL39E-020-0450 | TL39U-020-0450 | 2 x 20 | 450 | |
| | | TL39E-021-0428 | TL39U-021-0428 | 2 x 21 | 428 | |
| | | TL39E-024-0375 | TL39U-024-0375 | 2 x 24 | 375 | |
| | | TL39E-028-0321 | TL39U-028-0321 | 2 x 28 | 321 | |
| | | TL39E-115-0078 | TL39U-115-0078 | 2 x 115 | 78 | |

| Product Series | Primary (V) | Part Number | | Secondary Rating | | Agency Approval |
|----------------|-------------|----------------|----------------|------------------|------|----------------------------|
| | | TYPE I | TYPE II | (V) | (mA) | |
| 24VA | 2 x 115 | TL39E-005-2400 | TL39U-005-2400 | 2 x 5 | 2400 | UL506 C-UL TUV CE |
| | | TL39E-006-2000 | TL39U-006-2000 | 2 x 6 | 2000 | |
| | | TL39E-008-1500 | TL39U-008-1500 | 2 x 8 | 1500 | |
| | | TL39E-009-1333 | TL39U-009-1333 | 2 x 9 | 1333 | |
| | | TL39E-010-1200 | TL39U-010-1200 | 2 x 10 | 1200 | |
| | | TL39E-012-1000 | TL39U-012-1000 | 2 x 12 | 1000 | |
| | | TL39E-015-0800 | TL39U-015-0800 | 2 x 15 | 800 | |
| | | TL39E-017-0706 | TL39U-017-0706 | 2 x 17 | 706 | |
| | | TL39E-018-0666 | TL39U-018-0666 | 2 x 18 | 666 | |
| | | TL39E-020-0600 | TL39U-020-0600 | 2 x 20 | 600 | |
| | | TL39E-021-0571 | TL39U-021-0571 | 2 x 21 | 571 | |
| | | TL39E-024-0500 | TL39U-024-0500 | 2 x 24 | 500 | |
| | | TL39E-028-0429 | TL39U-028-0429 | 2 x 28 | 429 | |
| | | TL39E-115-0104 | TL39U-115-0104 | 2 x 115 | 104 | |
| 30VA | 2 x 115 | TL39E-005-3000 | TL39U-005-3000 | 2 x 5 | 3000 | UL506 C-UL TUV CE |
| | | TL39E-006-2500 | TL39U-006-2500 | 2 x 6 | 2500 | |
| | | TL39E-008-1875 | TL39U-008-1875 | 2 x 8 | 1875 | |
| | | TL39E-009-1666 | TL39U-009-1666 | 2 x 9 | 1666 | |
| | | TL39E-010-1500 | TL39U-010-1500 | 2 x 10 | 1500 | |
| | | TL39E-012-1250 | TL39U-012-1250 | 2 x 12 | 1250 | |
| | | TL39E-015-1000 | TL39U-015-1000 | 2 x 15 | 1000 | |
| | | TL39E-017-0882 | TL39U-017-0882 | 2 x 17 | 882 | |
| | | TL39E-018-0833 | TL39U-018-0833 | 2 x 18 | 833 | |
| | | TL39E-020-0750 | TL39U-020-0750 | 2 x 20 | 750 | |
| | | TL39E-021-0714 | TL39U-021-0714 | 2 x 21 | 714 | |
| | | TL39E-024-0625 | TL39U-024-0625 | 2 x 24 | 625 | |
| | | TL39E-028-0550 | TL39U-028-0550 | 2 x 28 | 550 | |
| | | TL39E-115-0130 | TL39U-115-0130 | 2 x 115 | 130 | |